



starritt

A slouchy beanie using subtle yarn changes to create an ombre effect, Starritt also features short row shaping to give extra drape. Stranded colourwork in a zingy contrast gives a modern geometric look.

Yarn: Rowan Fine Tweed (100% Wool, 98 yards per 25g skein). You will need 1 skein of each colour A, B, C, D and F, and 2 skeins of E.

Sample shown used Pendle (A), Nidd (B), Muker (C), Nappa (D), Bell Busk (E), and Leyburn (F).

Needles: 2.75mm (US 2) and 3mm (US 2.5) 16 inch circulars, and 3mm DPNs (or long circular for magic loop).

Gauge: 26 sts and 34 rows over stocking stitch (non stranded), blocked.

Measurements: 48cm (19") circumference at brim.

With 2.75mm needle and Pendle, cast on 134 sts. Place marker and join to begin working in the round, being careful not to twist.

Work (K1, P1) rib for 5 rounds. Change to 3mm needle.

Work round 1 of chart as follows: Work pattern repeat to 8 from end, M1 with colour B.

Work rounds 2 though 37 from Chart, joining in new colours when necessary.

Note: On round 10, work to 1 from end, slip 1, remove marker, slip st back to left needle and replace marker. (Beginning of round moved right).

On round 16, work from chart to end, remove marker, slip 1, replace marker. (Beginning of round moved left)

Work 7 rounds stocking stitch with E (Bell Busk).

You will now work short rows to add slouch as follows:

k91, w&t. s1, p47, w&t.
s1, k57, w&t. s1, p67, w&t.
s1, k77, w&t. s1, p87, w&t.
k to end.

Work 5 rounds straight without short rows.

k96, w&t. s1, p57, w&t.
s1, k67, w&t. s1, p77, w&t.
s1, k87, w&t. s1, p97, w&t.
k to end.

Work 31 rounds straight without shaping.

You will now begin to decrease to shape the top. Change to DPNs when necessary.

(k31, k2tog, k32, k2tog) twice. 130 sts.

(k2tog, k11)x10. 120 sts.

(k10, ssk)x10. 110 sts.

(k2tog, k9)x10. 100 sts.

(k8, ssk)x10. 90 sts.

(k2tog, k7)x10. 80 sts.

(k6, ssk)x10, . 70 sts.

(k2tog, k5)x10. 60 sts.

(k4, ssk)x10. 50 sts.

(k2tog, k3)x10. 40 sts.

(k2, ssk)x10. 30 sts.

(k2tog, k1)x10. 20 sts.

(ssk)x10. 10 sts.

Break yarn and draw through all sts to close, securing on the inside.

Weave in all ends and wet block.

© Copyright 2012 Lily France.

This pattern, photographs and items made from this pattern may not be sold without written permission.

<http://www.jolihouse.com>

Abbreviations:

K: knit

P: purl

St(s): stitch(es)

M1: make one knitwise

K2tog: knit two together

SSK: slip, slip, knit

w&t: Wrap and turn as follows. On a knit row: bring yarn forward, slip next stitch knitwise, bring yarn backwards, slip stitch on right needle tip back to left needle tip ensuring it stays twisted. *To pick up wrap:* from front of work insert right needle tip from bottom to top through wrap and place on left needle tip, knit together with stitch through back loop.

On a purl row: bring yarn backwards, slip next stitch purlwise, bring yarn forwards, slip stitch on right needle tip back to left needle tip. *To pick up wrap:* From back of work insert right needle tip from bottom to top through wrap and place on left needle tip, purl together with stitch.

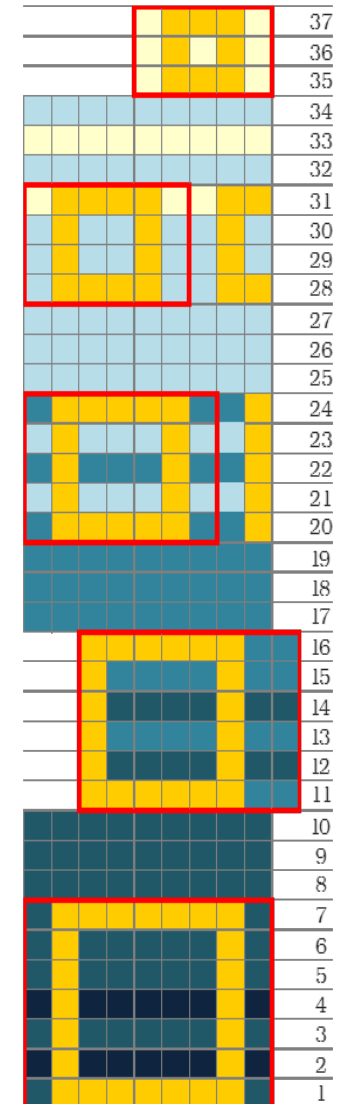
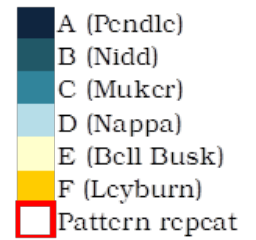


Chart is read from right to left on all rounds



lily kate
DESIGNS