

Latrigg

by lily kate



Latrigg is a messenger style bag that is knitted seamlessly and lined in a co-ordinating fabric.

Materials:

-Donegal Yarns Aran Tweed (100% wool; 320m/200g skeins): 160g/260m in Main Colour (MC) and 50g/80m in each of 2 contrasting colours (CC1 and CC2). Example shown uses Light Grey (2017) as MC, Aubergine (4843) as CC1 and Citron Yellow (4897) as CC2.

-3.75mm (UK 9/US 5) needles. Either 2 x 60cm circulars or one long circular.

-Waste yarn.

For Lining:

-Between ½ and ¾ metre lining fabric

-Co-ordinating thread

-Interfacing. On the knitted example we also used an iron on interfacing. This is entirely optional and may not be necessary depending on your chosen lining fabric and the effect desired.

Gauge:

25 stitches/31 rows in stockinette stitch on 3.75mm needles.

Abbreviations:

St(s) – stitch(es)

K – knit

P – Purl

S – Slip with yarn to wrong side

NR – next row/round

M – Marker

Pm – place marker

Sm – slip marker

RS – right side

WS – wrong side

K2tog – knit two together

P2tog – purl two together

MB – make bobble: knit into the front, back, front, back, front of next stitch, turn, purl 5, turn, knit 5, turn, purl 5, turn, knit 5, turn, purl 5 together, turn and carry on working as specified in pattern.

Instructions given in brackets are repeated as stated. E.g. (k1, p1)x5 means to repeat k1, p1 5 times in total.

Notes:

When working stripes only break yarn where specified and otherwise carry yarn up the side, being careful not to pull too tight.

Base

With MC, cast on 49 sts.

Row 1 – k1, (p1, k1) to end.

Row 2 – p1, (p1, k1) to last 2, p2.

Repeat last 2 rows 9 times more. Repeat row 1 once more.

Bind off all sts in pattern but do not break yarn at end.

You will now pick up and knit around the edges of the base to begin working on the main portion of the bag.

Note: When working the first few rounds of the bag, it may be helpful to use 2 circular needles or a longer needle with the Magic Loop method, rather than one smaller circular needle, as the corners may be a little tight. Once a few rounds have been worked, there will be enough fabric to make knitting normally on a circular needle possible, so change back to this method when you feel comfortable.

Bag Body

Using yarn already attached, pick up and knit around edges of base as follows:

49 along bind off edge,

1 in corner,

14 along side edge, (2 in every 3 rows)

1 in corner,

49 along cast on edge,

1 in corner,

14 along side edge,

1 in corner. 130 sts total.

Join to begin working in the round, k2, pm for beginning of round.

Round 1 - *k45, pm, p1, k3, p1, pm, (k1, p1)x5, pm, p1, k3, p1, pm, rep from * once more.

Round 2 - *k to m, sm, p1, s3, p1, sm, (p1, k1)x5, sm, p1, s3, p1, sm, rep from * once more.

Round 3 - *k to m, sm, p1, k3, p1, sm, (k1, p1)x5, sm, p1, k3, p1, sm, rep from * once more.

Repeat last 2 rounds until work measures 6½" from picking up. Work round 2 once more.

Round 4 - *k1, (p1, k1) to m, sm, p1, k3, p1, (k1, p1)x5, p1, k3, p1, rep from * once more.

Round 5 - *p1, (k1, p1) to m, sm, p1, s3, p1, (p1, k1)x5, p1, s3, p1, rep from * once more.

Work last 2 rounds 3 times more. (8 rounds total).

Work round 4 once more, ending 4 sts from end.

Change to CC1 but do not break MC.

Bind off 53sts, removing markers as you come to them. Place remaining 78 sts on waste yarn to be bound off later.



Repeat last 2 rows 5 times more.

Repeat row 2 once more.

Change to CC1 but do not break MC.

Bind off all sts.

With CC2 and from WS, pick up and knit 53 across sts just bound off. Break CC2 and resume using MC from before.

Work rows 1 & 2 once more.

You will now begin the sequence of stripes and bobbles as follows:

*Work 2 plain rows with CC2.

Work Bobble Row A with CC2.

**Work 1 plain row with CC2.

Work 2 plain rows with MC.

Work 2 plain rows with CC1.

Work bobble row B with CC1.

Work 1 row plain with CC1.

Work 2 rows plain with MC.

RS plain row: s3, p1, k20, p1, s3, p1, k20, p1, k3.

WS plain row: s3, k1, p20, k1, p3, k1, p20, k1, p3.

Bobble row A: s3, p1, (k3, MB)x4, k4, p1, s3, p1, k4, (MB, k3)x4, p1, k3.

Bobble row B: s3, p1, k1, (MB, k3)x4, MB, k2, p1, s3, p1, k2, MB, (k3, MB)x4, k1, p1, k3.



Flap

With CC2 and from WS, pick up and knit 53 across sts just bound off. Break yellow and resume using grey from before.

Note: Binding off and picking up again creates a sturdy ridge, which is necessary for defining the flap edges. It is not advisable to skip this stage.

Row 1(RS) - k3, p1, k20, p1, k3, p1, k20, p1, k3.

Row 2(WS) - s3, k1, p20, k1, p3, k1, p20, k1, p3.

Row 3 - s3, p1, k20, p1, s3, p1, k20, p1, k3.

Repeat sequence from * 3 more times (4 times in total). Then work from * to ** once more.

Break both CC1 and CC2 yarns as you will now work the moss stitch edging in only MC.

NR(RS) – s3, p1, (k1, p1)x10, p1, s3, p1, (p1, k1)x10, p1, k3.

NR(WS)– s3, k1, ((k1, p1)x10, k1, p3, k1, (p1, k1)x10, k1, p3.

Repeat last 2 rows twice more. (6 rows total).

Bind off all sts.

You will now work an extension to the bag gusset on each side, which will form the connecting part of the bag strap. The main part of the bag strap is then worked lengthways.

First extension

With RS facing, return first 12 sts from waste yarn onto needle, leaving the rest on the waste yarn. Rejoin MC.

Row 1(RS) – (p1, k1) to end.

Row 2(WS) – (k1, p1) to end.

Repeat last 2 rows 8 times more. (18 rows total).

Break yarn and place sts on holder/waste yarn.

Second extension

With WS facing, return first 12 sts from other end of waste yarn onto needle, leaving the rest on waste yarn. Rejoin MC.

Work 18 rows in moss stitch as before. Do not break yarn.

Strap

Using the Backwards loop method and MC attached to second extension, cast on 172 sts onto right needle tip.

Note: Length of bag strap can be easily adjusted by adding or subtracting an even number of sts. I wanted mine to be an across the body bag and I am quite tall but make the strap a length that suits you. Example strap measures 56" (including extensions) unstretched.

Place held sts from first extension onto left needle tip with RS facing. Make sure that sts just cast on for strap, on right needle tip, are not twisted and p1 from first extension. 196 sts (11 sts remain on left hand needle, and 185 sts on right hand needle).

You will now work back and forth on the central strap sts (as if working short rows) incorporating 1 stitch from the extensions at the end of every row, thus attaching the strap to the extensions and bag.

Change to CC2.

Row 1(RS) – s1, p1, pm, (k1, p1)x85, pm, k2tog, turn, leaving remaining second extension sts unworked. 195 sts.

Row 2(WS) – s1, sm, (p1,k1) to m, p2tog, turn, leaving remaining first extension sts unworked. 194 sts.

Change to CC1.

Row 3(RS) – s1, sm, (k1, p1) to m, sm, k2tog. 193 sts.

Work row 2 once more in CC1. 192 sts.

Carry on working in this manner (repeating rows 3 & 2) until there are no extension sts remaining, you should have 173 sts.

At same time make stripes by working 2 rows CC2, 2 rows CC1 and 2 rows MC.

You will end having worked 2 rows in MC. Bind off all sts in MC.

Place Remaining held sts from main body of bag onto needle. With RS facing, rejoin CC1. Bind off all sts in pattern.

Weave in all ends on WS and wet block. Placing a couple of books in a plastic bag inside is an effective way to ensure the bag keeps its shape.



Lining Instructions

Strap

Cut a piece of your lining fabric to fit the width of your strap allowing 1cm extra along each long side. The measurement for your strap length should include the extended gusset sections and an additional 3" in order that the strap can be tucked inside the lining.

Flap

Cut a rectangular piece of fabric to fit the flap and the top gusset allowing 1 cm on all sides for hems. Put aside the strap and flap pieces until later.

Main Bag Lining

Fold your remaining lining fabric in half with right sides together and lay it down on a flat surface with the folded edge closest to you.

Place your bag on top of lining fabric with its base aligned with the fold line of the lining fabric. Be sure to flatten the gusset as much as possible as this section needs to be included in your measurement.

Please note: You will not be including any allowance for the bag flap on this segment.

You will now trim the lining fabric to size. Allow 1cm at each side and 2cm at the top. The bag will likely be wider at the top than at its base. You should measure from the widest point. (Figure 1)

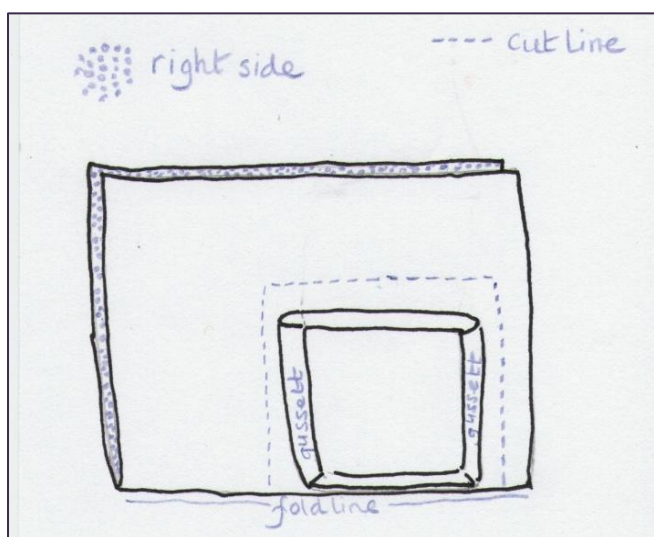


Figure 1

Using a 1cm seam allowance sew both side seams. You should now have a flat envelope style lining.

You will now convert this into a 3D lining.

Turn the lining upside down and open it out by placing hands inside and opening the bottom folded area to form a flat base. It's very difficult to describe this but hopefully it is clear from the illustration.

You will notice there are now 2 pointed 'ears' - 1 at each side. (Figure 2).

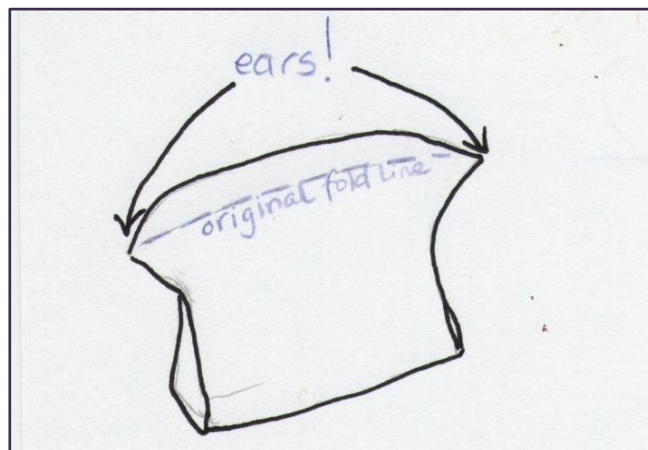


Figure 2

Fold the ears towards the centre of the base and pin them into place. The rectangular base shape should now be apparent, but will probably require some tweaking to fit the bag base dimensions. You will need to try it inside the bag and adjust as necessary to ensure a good fit. (Figure 3).

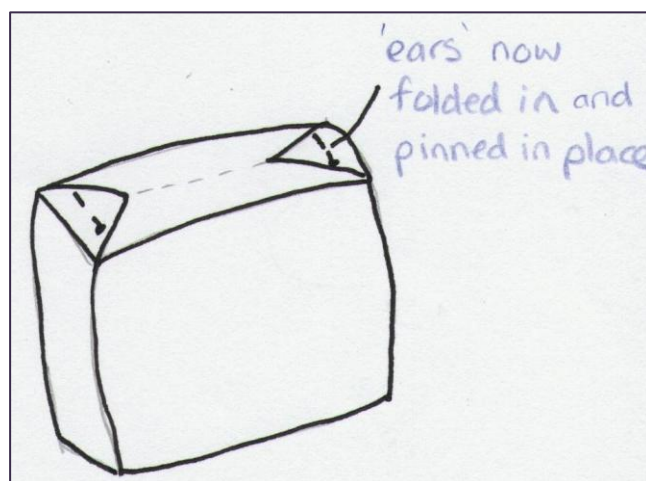


Figure 3

Once you're done tweaking, it may help if you iron the edges of the lining base rectangle and then iron from the corners of this rectangle upwards.

You can now sew along the fold to make those 'ear' seams permanent.

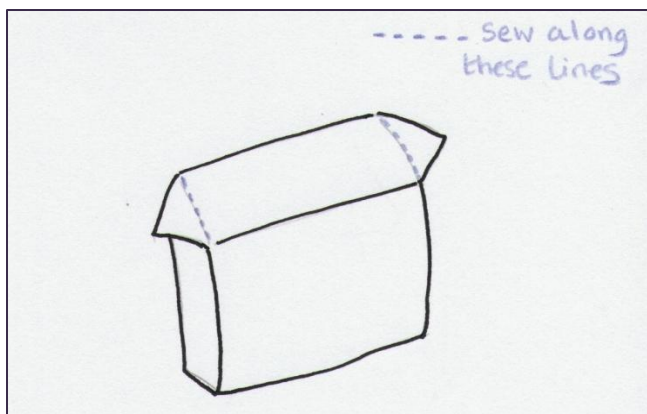


Figure 4

Insert lining into bag and fold and pin top hem allowance. Remove lining and iron this fold. Put lining aside whilst you attend to the strap. (Figure 5).

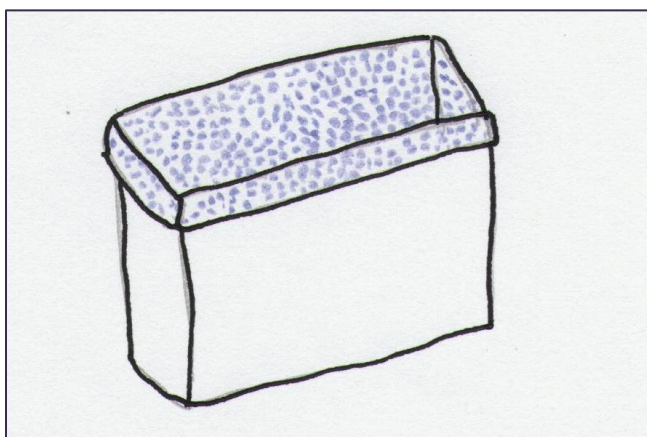


Figure 5

Iron a fold 1cm from each long side of the strap. Oversew the fabric onto the strap making sure that you are able to insert the strap 1 1/2" inside the bag. (Figure 6)

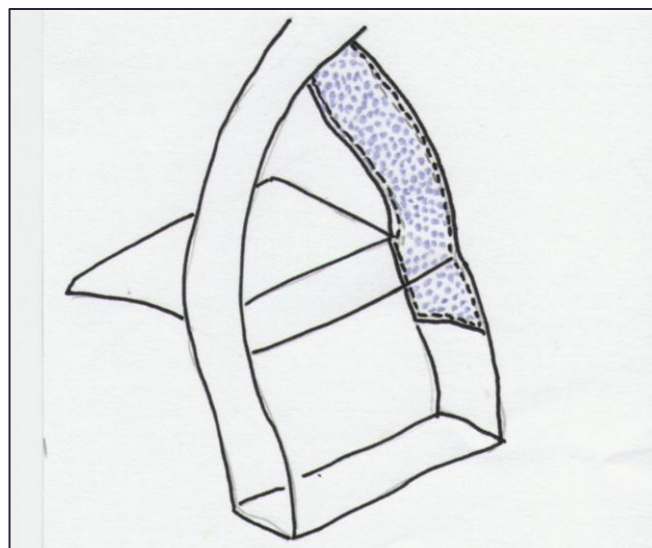


Figure 6

You can now insert the lining one last time and cover these strap ends. Oversew into place.

Take the flap lining fabric and iron a 1cm fold on all edges. Pin this fabric to inside of bag flap. Oversew the 3 flap edges as per the diagram. You will now be left with one open edge where the flap joins the bag. (Figure 7).

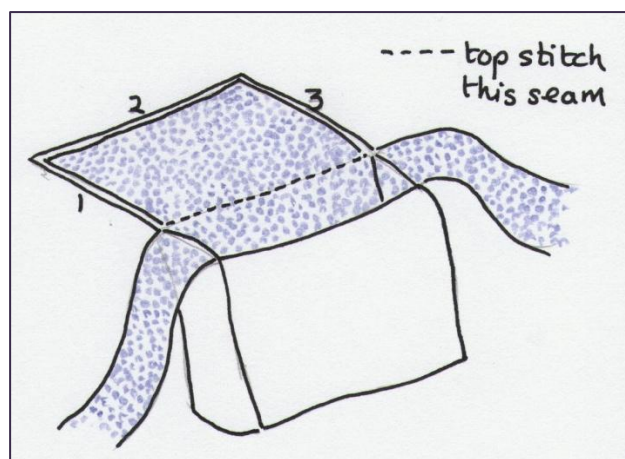


Figure 7

We found that topstitching this seam gave a neater finish and also added rigidity to the top of the bag but if you prefer to continue with the over sewing then please do so!

ENJOY YOUR BAG!