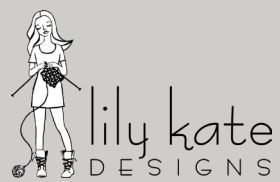


McKee



Yarn: Malabrigo Yarn Sock, (100% Merino, 440 yards/402m per 100g skein), 1 skein.

Needles: 1 pair 4mm/ US6 straight or circular needles.

Gauge: 24 sts/27 rows to 4" in stocking stitch on 4mm needles, blocked.

Abbreviations:

- k:** knit **p:** purl
s: slip **ssk:** slip, slip, knit
k2tog: knit two together
m1: make one from bar between stitches
ssp: slip, slip, purl
w&t: Wrap and turn as follows. *On a knit row:* bring yarn forward between needles, slip next stitch knitwise, bring yarn backwards between needles, slip stitch on right needle tip back to left needle tip ensuring it stays twisted. To pick up wrap: from front of work insert right needle tip from bottom to top through wrap and place on left needle tip, knit together with stitch through back loop.
On a purl row: bring yarn backwards between needles, slip next stitch purlwise, bring yarn forwards between needles, slip stitch on right needle tip back to left needle tip. To pick up wrap: From back of work insert right needle tip from bottom to top through wrap and place on left needle tip, purl together with stitch.
- pm:** place marker **rm:** remove marker
sm: slip marker **st(s):** stitch(es)
NR: next row **RS:** right side
WS: wrong side

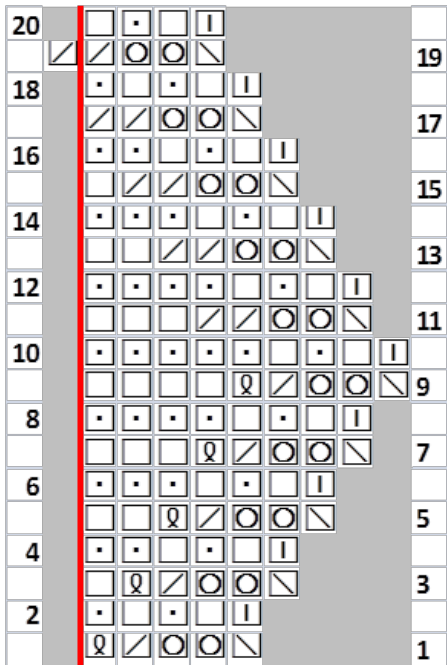
Notes:

- Always pick up wraps unless otherwise stated.
- On row 19 of the edging, it is necessary to move one stitch from the edging to the body of the shawl in order to work a decrease. To do so, work the 'ssk, yo twice, k2tog' in edging row 19, then slip the next stitch, remove the marker, slip stitch on right needle tip back to left needle tip, replace the marker, and then k2tog.
- Chart is worked from right to left on right side (odd numbered) rows, and from left to right on wrong side (even numbered) rows.
- All stitch counts are given excluding edging, as the stitch counts within the edging differ from row to row.

Edging - Written instructions

- Row 1:** Ssk, yo twice, k2tog, m1.
Row 2: K1, p1, k1, p1, s1.
Row 3: Ssk, yo twice, k2tog, m1, k1.
Row 4: K2, p1, k1, p1, s1.
Row 5: Ssk, yo twice, k2tog, m1, k2.
Row 6: K3, p1, k1, p1, s1.
Row 7: Ssk, yo twice, k2tog, m1, k3.
Row 8: K4, p1, k1, p1, s1.
Row 9: Ssk, yo twice, k2tog, m1, k4.
Row 10: K5, p1, k1, p1, s1.
Row 11: Ssk, yo twice, k2tog, k2tog, k3.
Row 12: K4, p1, k1, p1, s1.
Row 13: Ssk, yo twice, k2tog, k2tog, k2.
Row 14: K3, p1, k1, p1, s1.
Row 15: Ssk, yo twice, k2tog, k2tog, k1.
Row 16: K2, p1, k1, p1, s1.
Row 17: Ssk, yo twice, k2tog, k2tog.
Row 18: K1, p1, k1, p1, s1.
Row 19: Ssk, yo twice, k2tog, s1, rm, slip st on rt needle back to left, pm, k2tog (in shawl body).
Row 20: P1, k1, p1, s1.

Edging chart



| | |
|--|------------------|
| | K on RS, P on WS |
| | K on WS, P on RS |
| | Ssk |
| | K2tog |
| | YO |
| | Slip |
| | Marker |

Pattern

Set up rows

Using the long-tail method, cast on 66 sts.

NR (RS): Knit one row.

NR (WS): K to last st, s1.

NR: Knit one row.

NR: K to last st, s1.

You will now begin to work short rows in batches to curve the tip of the shawl. Refer to either written or charted instructions for edging. Remember to pick up any wraps as you work back across the row.

Short row batch 1

Row 1: Edging row 1, pm, k6, w&t. 62 sts.

Row 2: S1, p to m, sm, edging row 2.

Row 3: Edging row 3, sm, k12, w&t.

Row 4: S1, p to m, sm, edging row 4.

Row 5: Edging row 5, sm, k18, w&t.

Row 6: S1, p to m, sm, edging row 6.

Row 7: Edging row 7, sm, k24, w&t.

Row 8: S1, p to m, sm, edging row 8.

Row 9: Edging row 9, sm, k30, w&t.

Row 10: S1, P to 2 sts before m, ssp, sm, edging row 10. 61 sts.

Row 11: Edging row 11, sm, k35, w&t.

Row 12: S1, p to m, sm, edging row 12.

Row 13: Edging row 13, sm, k41, w&t.

Row 14: S1, p to m, sm, edging row 14.

Row 15: Edging row 15, sm, k47, w&t.

Row 16: S1, p to m, sm, edging row 16.

Row 17: Edging row 17, sm, k53, w&t.

Row 18: S1, p to m, sm, edging row 18.

Row 19: Edging row 19, k58, w&t.

Row 20: S1, p to 2 sts before m, ssp, sm, edging row 20. 60 sts.

Short row batch 2

Row 21: Edging row 1, sm, k6, w&t.

Row 22: S1, p to m, sm, edging row 2.

Row 23: Edging row 3, sm, k12, w&t.

Row 24: S1, p to m, sm, edging row 4.

Row 25: Edging row 5, sm, k18, w&t.

Row 26: S1, p to m, sm, edging row 6.

Row 27: Edging row 7, sm, k24, w&t.

Row 28: S1, p to m, sm, edging row 8.

Row 29: Edging row 9, sm, k30, w&t.

Row 30: S1, p to 2 sts before m, ssp, sm, edging row 10. 59 sts.

Row 31: Edging row 11, sm, k35, w&t.

Row 32: S1, p to m, sm, edging row 12.

Row 33: Edging row 13, sm, k41, w&t.

Row 34: S1, p to m, sm, edging row 14.

Row 35: Edging row 15, sm, k47, w&t.

Row 36: S1, p to m, sm, edging row 16.

Row 37: Edging row 17, sm, k53, w&t.

Row 38: S1, p to m, sm, edging row 18.

Row 39: Edging row 19, k57, w&t.

Row 40: S1, p to 2 sts before m, ssp, sm, edging row 20. 58 sts.

Short row batch 3

Row 41: Edging row 1, sm, k5, w&t.

Row 42: S1, p to m, sm, edging row 2.

Row 43: Edging row 3, sm, k11, w&t.

Row 44: S1, p to m, sm, edging row 4.

Row 45: Edging row 5, sm, k17, w&t.

Row 46: S1, p to m, sm, edging row 6.

Row 47: Edging row 7, sm, k23, w&t.

Row 48: S1, p to m, sm, edging row 8.

Row 49: Edging row 9, sm, k29, w&t.

Row 50: S1, p to 2 sts before m, ssp, sm, edging row 10. 57 sts.

Row 51: Edging row 11, sm, k34, w&t.

Row 52: S1, p to m, sm, edging row 12.

Row 53: Edging row 13, sm, k40, w&t.

Row 54: S1, p to m, sm, edging row 14.

Row 55: Edging row 15, sm, k46, w&t.

Row 56: S1, p to m, sm, edging row 16.

Row 57: Edging row 17, sm, k52, w&t.

Row 58: S1, p to m, sm, edging row 18.

Row 59: Edging row 19, k54, w&t.

Row 60: S1, p to 2 sts before m, ssp, sm, edging row 20. 56 sts.

Short row batch 4

Row 61: Edging row 1, sm, k5, w&t.

Row 62: S1, p to m, sm, edging row 2.

Row 63: Edging row 3, sm, k10, w&t.

Row 64: S1, p to m, sm, edging row 4.

Row 65: Edging row 5, sm, k15, w&t.

Row 66: S1, p to m, sm, edging row 6.

Row 67: Edging row 7, sm, k20, w&t.

Row 68: S1, p to m, sm, edging row 8.

Row 69: Edging row 9, sm, k25, w&t.

Row 70: S1, p to 2 sts before m, ssp, sm, edging row 10. 55 sts.

Row 71: Edging row 11, sm, k29, w&t.

Row 72: S1, p to m, sm, edging row 12.

Row 73: Edging row 13, sm, k34, w&t.

Row 74: S1, p to m, sm, edging row 14.

Row 75: Edging row 15, sm, k39, w&t

Row 76: S1, p to m, sm, edging row 16.

Row 77: Edging row 17, sm, k44, w&t.

Row 78: S1, p to m, sm, edging row 18.

Row 79: Edging row 19, k48, w&t.

Row 80: S1, p to 2 sts before m, ssp, sm, edging row 20. 54 sts.

Short row batch 5

Row 81: Edging row 1, sm, k5, w&t.

Row 82: S1, p to m, sm, edging row 2.

Row 83: Edging row 3, sm, k10, w&t.

Row 84: S1, p to m, sm, edging row 4.

Row 85: Edging row 5, sm, k15, w&t.

Row 86: S1, p to m, sm, edging row 6.

Row 87: Edging row 7, sm, k20, w&t.

Row 88: S1, p to m, sm, edging row 8.

Row 89: Edging row 9, sm, k25, w&t.

Row 90: S1, p to 2 sts before m, ssp, sm, edging row 10. 53 sts.

Row 91: Edging row 11, sm, k29, w&t.

Row 92: S1, p to m, sm, edging row 12.

Row 93: Edging row 13, sm, k34, w&t.

Row 94: S1, p to m, sm, edging row 14.

Row 95: Edging row 15, sm, k39, w&t.

Row 96: S1, p to m, sm, edging row 16.

Row 97: Edging row 17, sm, k44, w&t

Row 98: S1, p to m, sm, edging row 18.

Row 99: Edging row 19, k48, w&t.

Row 100: S1, p to 2 sts before m, ssp, sm, edging row 20. 52 sts.

Short row batch 6

Row 101: Edging row 1, sm, k5, w&t.

Row 102: S1, p to m, sm, edging row 2.

Row 103: Edging row 3, sm, k10, w&t.

Row 104: S1, p to m, sm, edging row 4.

Row 105: Edging row 5, sm, k15, w&t.

Row 106: S1, p to m, sm, edging row 6.

Row 107: Edging row 7, sm, k20, w&t.

Row 108: S1, p to m, sm, edging row 8.

Row 109: Edging row 9, sm, k25, w&t.

Row 110: S1, p to 2 sts before m, ssp, sm, edging row 10. 51 sts.

Row 111: Edging row 11, sm, k29, w&t.

Row 112: S1, p to m, sm, edging row 12.

Row 113: Edging row 13, sm, k34, w&t.

Row 114: S1, p to m, sm, edging row 14.

Row 115: Edging row 15, sm, k39, w&t.

Row 116: S1, p to m, sm, edging row 16.

Row 117: Edging row 17, sm, k44, w&t.

Row 118: S1, p to m, sm, edging row 18.

Row 119: Edging row 19, k47, w&t.

Row 120: S1, p to 2 sts before m, ssp, sm, edging row 20. 50 sts.

Short row batch 7

Row 121: Edging row 1, sm, k5, w&t.

Row 122: S1, p to m, sm, edging row 2.

Row 123: Edging row 3, sm, k10, w&t.

Row 124: S1, p to m, sm, edging row 4.

Row 125: Edging row 5, sm, k15, w&t.

Row 126: S1, p to m, sm, edging row 6.

Row 127: Edging row 7, sm, k20, w&t.

Row 128: S1, p to m, sm, edging row 8.

Row 129: Edging row 9, sm, k25, w&t.

Row 130: S1, p to 2 sts before m, ssp, sm, edging row 10. 49 sts.

Row 131: Edging row 11, sm, k29, w&t.

Row 132: S1, p to m, sm, edging row 12.

Row 133: Edging row 13, sm, k34, w&t.

Row 134: S1, p to m, sm, edging row 14.

Row 135: Edging row 15, sm, k39, w&t.

Row 136: S1, p to m, sm, edging row 16.

Row 137: Edging row 17, sm, k44, w&t.

Row 138: S1, p to m, sm, edging row 18.

Row 139: Edging row 19, k to end.

Row 140: S1, p to 2 sts before m, ssp, sm, edging row 20. 48 sts.

Row 141: Edging row 1, sm, k to end, pick up 3 sts along the garter edge of set up rows. 51sts.

Row 142: S1, k2, p to m, sm, edging row 2.

Row 143: Edging row 3, sm, k to end.

Rows 144 through 158: Continue working rows 4 through 18 of edging pattern working body sts as set.

Row 159: Edging row 19, k1, m1, k to end. 52sts.

Row 160: S1, k2, p to m, sm, edging row 20.

Rows 161 through 178: Continue working straight with edging and garter edge as set without shaping.

Row 179: Edging row 19, k1, m1, k to end. 53 sts.

Row 180: S1, k2, p to m, sm, edging row 20.

Rows 181 through 200: Work as rows 161 through 180. 54 sts.

You will now work short rows to give the shawl a gentle crescent shape.

Row 201: Edging row 1, sm, k18, w&t.

Row 202: S1, p to m, sm, edging row 2.

Row 203: Edging row 3, sm, k36, w&t.

Row 204: S1, p to m, sm, edging row 4.

Rows 205-210: Continue working edging rows 5 through 10 and garter edge as set without short rows.

Row 211: Edging row 11, sm, k18, w&t.

Row 212: S1, p to m, sm, edging row 12.

Row 213: Edging row 13, sm, k36, w&t.

Row 214: S1, p to m, sm, edging row 14.

Rows 215 through 218: Continue working edging rows 15 through 18 and garter edge as set without short rows.

Row 219: Edging row 19, k1, m1, k to end. 55 sts.

Row 220: S1, k2, p to m, sm, edging row 20.

Rows 221 through 230: Continue working edging rows 1 through 10 and garter edge as set without increases or short rows.

You will now begin to create the 'point' in the centre of the shawl.

Row 231: Edging row 11, sm, k1, m1, k to end. 56 sts excluding edging.

Row 232: S1, k2, p to m, sm, edging row 12.

Row 233: Edging row 13, sm, k1, m1, k to end. 57 st.

Row 234: S1, k2, p to m, sm, edging row 14.

Row 235: Edging row 15, sm, k1, m1, k to end. 58 sts.

Row 236: S1, k2, p to m, sm, edging row 16.

Row 237: Edging row 17, sm, k1, m1, k to end. 59 sts.

Row 238: S1, k2, p to m, sm, edging row 18.

Row 239: Edging row 19, m1, k to end. 60 sts.

Row 240: S1, k2, p53, w&t.

Row 241: S1, k to end.

Row 242: S1, k2, p49, w&t.

Row 243: S1, k to end.

Row 244: S1, k2, p45, w&t.

Row 245: S1, k to end.

Row 246: S1, k2, p41, w&t.

Row 247: S1, k to end.

Row 248: S1, k2, p37, w&t.

Row 249: S1, k to end.

Row 250: S1, k2, p to m, sm, edging row 20.

Row 251: Edging row 1, sm, k1, m1, k20, w&t. 61 sts.

Row 252: K to 1 st before m, p1, sm, edging row 2.

Row 253: Edging row 3, sm, k1, m1, k17, w&t. 62 sts.

Row 254: K to 1 st before m, p1, sm, edging row 4.

Row 255: Edging row 5, sm, k1, m1, k14, w&t. 63 sts.

Row 256: K to 1 st before m, p1, sm, edging row 6.

Row 257: Edging row 7, sm, k1, m1, k11, w&t. 64 sts.

Row 258: K to 1 st before m, p1, sm, edging row 8.

Row 259: Edging row 9, sm, k1, m1, k9, w&t. 65 sts.

Row 260: K to 1 st before m, p1, sm, edging row 10.

Row 261: Edging row 11, sm, k1, m1, k7, w&t. 66 sts.

Row 262: K to 1 st before m, p1, sm, edging row 12.

Row 263: Edging row 13, sm, k1, m1, k5, w&t. 67 sts.

Row 264: K to 1 st before m, p1, sm, edging row 14.

Row 265: Edging row 15, sm, k1, m1, k4, w&t. 68 sts.

Row 266: K to 1 st before m, p1, sm, edging row 16.

Row 267: Edging row 17, sm, k1, m1, k3, w&t. 69 sts.

Row 268: K to 1 st before m, p1, sm, edging row 18.

Row 269: Edging row 19, m1, k2, w&t. 70 sts.

Row 270: K to 1 st before m, p1, sm, edging row 20.

Row 271: Ssk, yo twice, k2tog, sm, k to end.

Row 272: S1, k2, p32, k to 1 st before m, p1, sm, p1, k1, p1, s1.

Row 273: Edging row 1, sm, ssk, k2, w&t. 69 sts.

Row 274: K to 1 st before m, p1, sm, edging row 2.

Row 275: Edging row 3, sm, ssk, k3, w&t. 68 sts.

Row 276: K to 1 st before m, p1, sm, edging row 4.

Row 277: Edging row 5, sm, ssk, k4, w&t. 67 sts.

Row 278: K to 1 st before m, p1, sm, edging row 6.

Row 279: Edging row 7, sm, ssk, k5, w&t. 66 sts.

Row 280: K to 1 st before m, p1, sm, edging row 8.

Row 281: Edging row 9, sm, ssk, k7, w&t. 65 sts.

Row 282: K to 1 st before m, p1, sm, edging row 10.

Row 283: Edging row 11, sm, ssk, k9, w&t. 64 sts.

Row 284: K to 1 st before m, p1, sm, edging row 12.

Row 285: Edging row 13, sm, ssk, k11, w&t. 63 sts.

Row 286: K to 1 st before m, p1, sm, edging row 14.
Row 287: Edging row 15, sm, ssk, k14, w&t. 62 sts.
Row 288: K to 1 st before m, p1, sm, edging row 16.
Row 289: Edging row 17, sm, ssk, k17, w&t. 61 sts.
Row 290: K to 1 st before m, p1, sm, edging row 18.
Row 291: Modified edging row 19 worked as follows:
 ssk, yo twice, k2tog, sl1, rm, slip st on rt needle back to
 left needle, pm, sl, k2tog, pass slipped stitch over, k20,
 w&t. 60 sts.
Row 292: K to 1 st before m, p1, sm, edging row 20.
Row 293: Edging row 1, sm, ssk, k to end. 59 sts.
Row 294: S1, k2, p37, w&t.
Row 295: S1, k to end.
Row 296: S1, k2, p41, w&t.
Row 297: S1, k to end.
Row 298: S1, k2, p45, w&t.
Row 299: S1, k to end.
Row 300: S1, k2, p49, w&t.
Row 301: S1, k to end.
Row 302: S1, k2, p53, w&t.
Row 303: S1, k to end.

Row 304: S1, k2, p to m, sm, edging row 2.
Row 305: Edging row 3, sm, ssk, k to end. 58sts.
Row 306: S1, k2, p to m, sm, edging row 4.
Row 307: Edging row 5, sm, ssk, k to end. 57sts.
Row 308: S1, k2, p to m, sm, edging row 6.
Row 309: Edging row 7, sm, ssk, k to end. 56 sts.
Row 310: S1, k2, p to m, sm, edging row 8.
Row 311: Edging row 9, sm, ssk, k to end. 55 sts.
Row 312: S1, k2, p to m, sm, edging row 10.

Rows 313 through 322: Continue working edging rows
 11 through 20 and garter edge as set without shaping.

Row 323: Edging row 1, sm, ssk, k to end. 54 sts.

Rows 324 through 328: Continue working edging
 rows 2 through 6 and garter edges as set.

Row 329: Edging row 7, sm, k36, w&t.

Row 330: S1, p to m, sm, edging row 8.

Row 331: Edging row 9, sm, k18, w&t.

Row 332: S1, p to m, sm, edging row 10.

Row 332: S1, p to m, sm, edging row 10.

Rows 333 through 338: Continue working edging
 rows 11 through 16 and garter edging as set without
 short rows.

Row 339: Edging row 17, sm, k36, w&t.

Row 340: S1, p to m, sm, edging row 18.

Row 341: Edging row 19, k17, w&t.

Row 342: S1, p to m, sm, edging row 20.

Row 343: Edging row 1, sm, ssk, k to end. 53 sts.

Rows 344 through 362: Work edging rows 2 through
 20 and garter edge as set without decreasing.

Rows 363 through 402: Repeat rows 343 through 362
 twice more. 51 sts.

*You will now begin to work short rows in batches again
 to curve the other tip of the shawl.*

Short row batch 1

Row 403: Edging row 1, sm, k1, m1, k45, w&t. 52 sts.

Row 404: S1, p to m, sm, edging row 2.

Row 405: Edging row 3, sm, k44, w&t.

Row 406: S1, p to m, sm, edging row 4.

Row 407: Edging row 5, sm, k39, w&t.

Row 408: S1, p to m, sm, edging row 6.

Row 409: Edging row 7, sm, k34, w&t.

Row 410: S1, p to m, sm, edging row 8.

Row 411: Edging row 9, sm, k29, w&t.

Row 412: S1, p to m, sm, edging row 10.

Row 413: Edging row 11, sm, k1, m1, k23, w&t. 53sts.

Row 414: S1, p to m, sm, edging row 12.

Row 415: Edging row 13, sm, k20, w&t.

Row 416: S1, p to m, sm, edging row 14.

Row 417: Edging row 15, sm, k15, w&t.

Row 418: S1, p to m, sm, edging row 16.

Row 419: Edging row 17, sm, k10, w&t.

Row 420: S1, p to m, sm, edging row 18.

Row 421: Edging row 19, k4, w&t.

Row 422: S1, p to m, sm, edging row 20.

Short row batch 2

Row 423: Edging row 1, sm, k1, m1, k45, w&t. 54 sts .

Row 424: S1, p to m, sm, edging row 2.

Row 425: Edging row 3, sm, k43, w&t.

Row 426: S1, p to m, sm, edging row 4.

Row 427: Edging row 5, sm, k39, w&t.

Row 428: S1, p to m, sm, edging row 6.

Row 429: Edging row 7, sm, k34, w&t.

Row 430: S1, p to m, sm, edging row 8.

Row 431: Edging row 9, sm, k29, w&t.

Row 432: S1, p to m, sm, edging row 10.

Row 433: Edging row 11, sm, k1, m1, k23, w&t. 55 sts

Row 434: S1, p to m, sm, edging row 12.

Row 435: Edging row 13, sm, k20, w&t.
Row 436: S1, p to m, sm, edging row 14.
Row 437: Edging row 15, sm, k15, w&t.
Row 438: S1, p to m, sm, edging row 16.
Row 439: Edging row 17, sm, k10, w&t.
Row 440: S1, p to m, sm, edging row 18.
Row 441: Edging row 19, k4, w&t.
Row 442: S1, p to m, sm, edging row 20.

Short row batch 3

Row 443: Edging row 1, sm, k1, m1, k50, w&t. 56 sts.
Row 444: S1, p to m, sm, edging row 2.
Row 445: Edging row 3, sm, k46, w&t.
Row 446: S1, p to m, sm, edging row 4.
Row 447: Edging row 5, sm, k40, w&t.
Row 448: S1, p to m, sm, edging row 6.
Row 449: Edging row 7, sm, k34, w&t.
Row 450: S1, p to m, sm, edging row 8.
Row 451: Edging row 9, sm, k29, w&t.
Row 452: S1, p to m, sm, edging row 10.
Row 453: Edging row 11, sm, k1, m1, k23, w&t. 57sts.
Row 454: S1, p to m, sm, edging row 12.
Row 455: Edging row 13, sm, k20, w&t.
Row 456: S1, p to m, sm, edging row 14.
Row 457: Edging row 15, sm, k15, w&t.
Row 458: S1, p to m, sm, edging row 16.
Row 459: Edging row 17, sm, k10, w&t.
Row 460: S1, p to m, sm, edging row 18.
Row 461: Edging row 19, k4, w&t.
Row 462: S1, p to m, sm, edging row 20.

Short row batch 4

Row 433: Edging row 1, sm, k1, m1, k51, w&t. 58 sts.
Row 434: S1, p to m, sm, edging row 2.
Row 435: Edging row 3, sm, k46, w&t.
Row 436: S1, p to m, sm, edging row 4.
Row 437: Edging row 5, sm, k40, w&t.
Row 438: S1, p to m, sm, edging row 6.
Row 439: Edging row 7, sm, k34, w&t.
Row 440: S1, p to m, sm, edging row 8.
Row 441: Edging row 9, sm, k29, w&t.
Row 442: S1, p to m, sm, edging row 10.
Row 443: Edging row 11, sm, k1, m1, k23, w&t. 59sts.
Row 444: S1, p to m, sm, edging row 12.
Row 445: Edging row 13, sm, k20, w&t.
Row 446: S1, p to m, sm, edging row 14.
Row 447: Edging row 15, sm, k15, w&t.

Row 448: S1, p to m, sm, edging row 16.
Row 449: Edging row 17, sm, k10, w&t.
Row 450: S1, p to m, sm, edging row 18.
Row 451: Edging row 19, k4, w&t.
Row 452: S1, p to m, sm, edging row 20.

Short row batch 5

Row 433: Edging row 1, sm, k1, m1, k53, w&t. 60 sts.
Row 434: S1, p to m, sm, edging row 2.
Row 435: Edging row 3, sm, k50, w&t.
Row 436: S1, p to m, sm, edging row 4.
Row 437: Edging row 5, sm, k44, w&t.
Row 438: S1, p to m, sm, edging row 6.
Row 439: Edging row 7, sm, k38, w&t.
Row 440: S1, p to m, sm, edging row 8.
Row 441: Edging row 9, sm, k32, w&t.
Row 442: S1, p to m, sm, edging row 10.
Row 443: Edging row 11, sm, k1, m1, k25, w&t. 61sts.
Row 444: S1, p to m, sm, edging row 12.
Row 445: Edging row 13, sm, k21, w&t.
Row 446: S1, p to m, sm, edging row 14.
Row 447: Edging row 15, sm, k15, w&t.
Row 448: S1, p to m, sm, edging row 16.
Row 449: Edging row 17, sm, k10, w&t.
Row 450: S1, p to m, sm, edging row 18.
Row 451: Edging row 19, k4, w&t.
Row 452: S1, p to m, sm, edging row 20.

Short row batch 6

Row 453: Edging row 1, sm, k1, m1, k54, w&t. 62 sts.
Row 454: S1, p to m, sm, edging row 2.
Row 455: Edging row 3, sm, k50, w&t.
Row 456: S1, p to m, sm, edging row 4.
Row 457: Edging row 5, sm, k44, w&t.
Row 458: S1, p to m, sm, edging row 6.
Row 459: Edging row 7, sm, k38, w&t.
Row 460: S1, p to m, sm, edging row 8.
Row 461: Edging row 9, sm, k32, w&t.
Row 462: S1, p to m, sm, edging row 10.
Row 463: Edging row 11, sm, k1, m1, k25, w&t. 63sts.
Row 464: S1, p to m, sm, edging row 12.
Row 465: Edging row 13, sm, k21, w&t.
Row 466: S1, p to m, sm, edging row 14.
Row 467: Edging row 15, sm, k15, w&t.
Row 468: S1, p to m, sm, edging row 16.
Row 469: Edging row 17, sm, k10, w&t.
Row 470: S1, p to m, sm, edging row 18.

Row 471: Edging row 19, k4, w&t.

Row 472: S1, p to m, sm, edging row 20.

Short row batch 7

Row 473: Edging row 1, sm, k1, m1, k58, w&t. 64 sts .

Row 474: S1, p to m, sm, edging row 2.

Row 475: Edging row 3, sm, k54, w&t.

Row 476: S1, p to m, sm, edging row 4.

Row 477: Edging row 5, sm, k48, w&t.

Row 478: S1, p to m, sm, edging row 6.

Row 479: Edging row 7, sm, k42, w&t.

Row 480: S1, p to m, sm, edging row 8.

Row 481: Edging row 9, sm, k36, w&t.

Row 482: S1, p to m, sm, edging row 10.

Row 483: Edging row 11, sm, k1, m1, k29, w&t. 65sts.

Row 484: S1, p to m, sm, edging row 12.

Row 485: Edging row 13, sm, k25, w&t.

Row 486: S1, p to m, sm, edging row 14.

Row 487: Edging row 15, sm, k19, w&t.

Row 488: S1, p to m, sm, edging row 16.

Row 489: Edging row 17, sm, k13, w&t.

Row 490: S1, p to m, sm, edging row 18.

Row 491: Edging row 19, k6, w&t.

Row 492: S1, p to m, sm, edging row 20.

Row 493: Ssk, yo twice, k2tog, remove m, k to 4 from end, k2tog, turn. 64 sts.

Row 494: K to last 4 sts, p1, k1, p1, s1.

Row 495: K to last 3 sts, k2tog, turn. 63 sts.

Row 496: K to last st, s1.

Row 497: K to last 2 sts, k2tog. 62 sts.

Cast off all sts knitwise.

Weave in all ends and block, noting that you will have to use several pins per repeat of the edging to ensure your shawl has a wavy edge rather than spiky. Enjoy!

